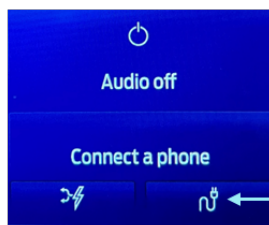


How to set-up Charge Limit via Sync 3 System

Step 1

On the home screen, press the Charge button



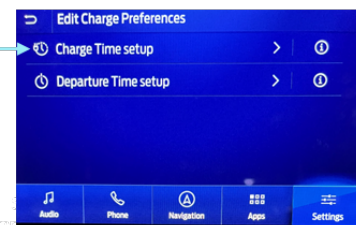
Step 2

Press Charge Preferences



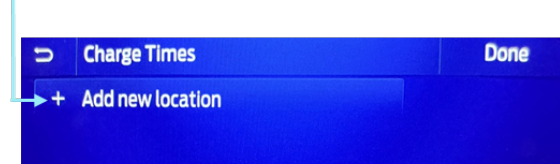
Step 3

Press Charge Time Setup



Step 4

Press Add New Location



Note: Before you add a location, you must have charged your vehicle there at least once

Step 5

Once you have selected your location, you can now rename it



Step 6

Next, you can adjust your Max Charge Level up to 80%



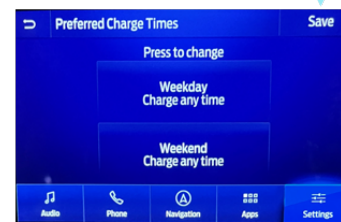
Step 7

Now press Continue to schedule



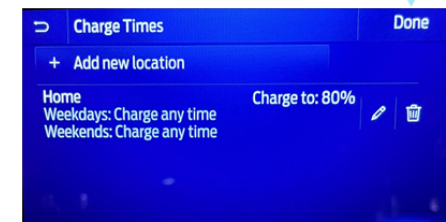
Step 8

You can now press Save (You can add charge times here, if preferred)



Step 9

Press Done to finish

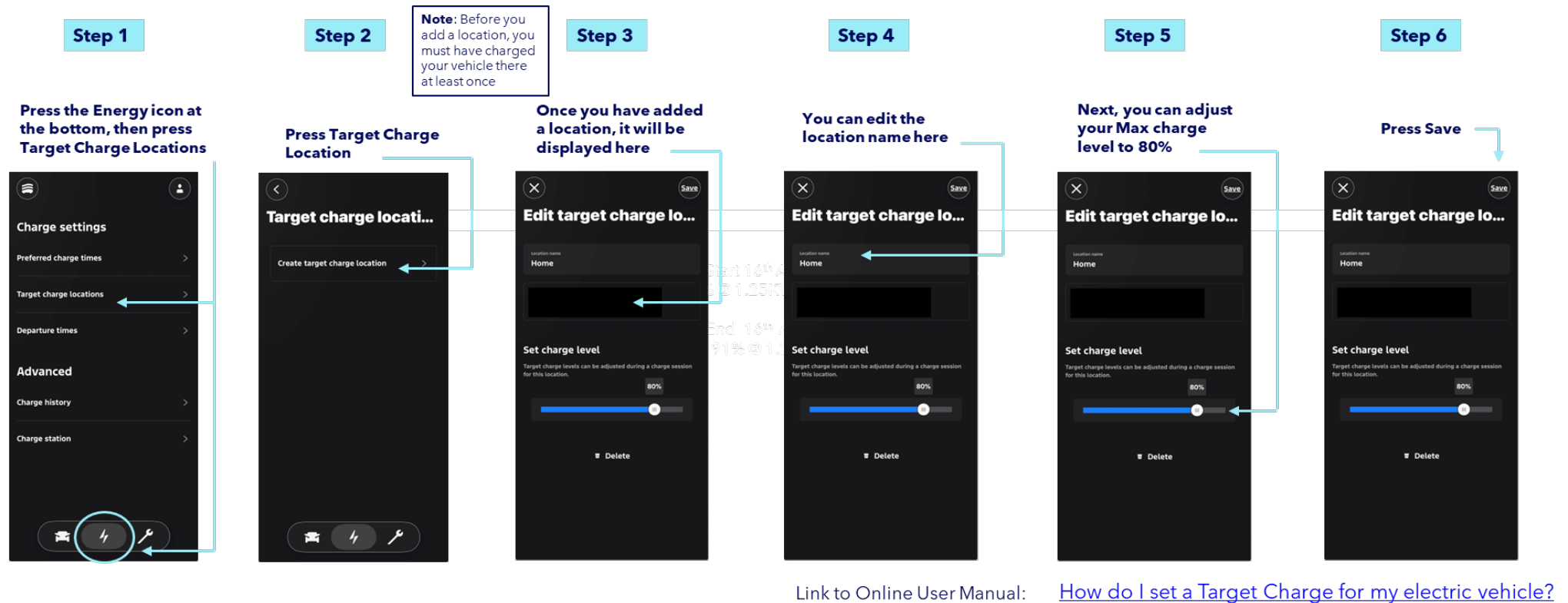


Link to Online User Manual:

[SYNC™ 3 - Electric Vehicle Information](#)

- Procedure In Sync For Charge Limiting At Up To 10 Locations

How to set-up Charge Limit via FordPass Mobile App



- Procedure In FordPass For Charge Limiting At Up To 10 Locations